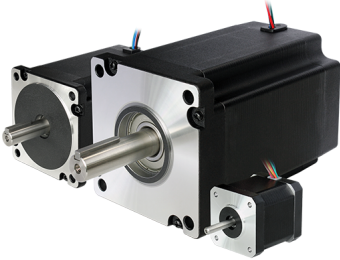


2S42Q-0348



- Phase Current (A) Series: 0.7 Parallel: 1.4
- Holding Torque: 0.34

?????????: ??? ?????????????? ?????

Price

Sales price without tax 35,00 €

[?????? ? ? ?](#)

Manufacturer[????????????? Kinco](#)

Description	Technical Specifications	2S42Q-0348
	Step Angle	1.8°
Phase Current (A)	Series	0.7
	Parallel	1.4
Holding Torque (Nm)		0.34
Damping Torque (Nm)		0.026
Winding Resistance (?)		4.6±10%
Winding Inductance (mH)		4.0±20%
Motor Inertia (kg.cm)		0.068
Motor Length L (mm)		48
Shaft Diameter (mm)		5
Number Of Lead Wires		8
Insulation Class		B
Withstand Voltage Level		500VAC For 1minute
Max. Axial Load (N)		10N
Max. Radial Load (N)		28N

	(20mm From The Flange)
Operating Temperature	-20??+50?
Surface Temperature Rise	Max.80? (Both Phases Connected With Rated Current)
Insulation Impedance	Minimum 100M?, 500V DC
Weight (kg)	0.36
No-Load Start Frequency	14K
Ingress Protection	IP40

[2S42Q-0348 Dimensions](#)

[KincoCatalog Stepper](#)