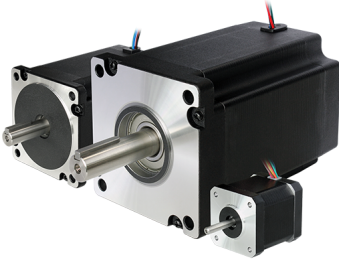


## 2S57Q-0541



- Phase Current (A) Series: 0.70 Parallel: 1.50
- Holding Torque: 0.5

?????????: ??? ?????????????????

**Price**

Sales price without tax 35,00 €

[??????? ??? ?? ??????](#)

Manufacturer[??????????????: Kinco](#)

Description	<b>Technical Specifications</b>		<b>2S57Q-05</b>
			<b>41</b>
	<b>Step Angle</b>		1.8°
<b>Phase Current (A)</b>	<b>Series</b>	0.70	
	<b>Parallel</b>	1.50	
<b>Holding Torque (Nm)</b>			0.5
<b>Damping Torque (Nm)</b>			0.022
<b>Winding Resistance (?)</b>			3.6±10%
<b>Winding Inductance (mH)</b>			4.1±20%
<b>Motor Inertia (kg.cm)</b>			0.135
<b>Motor Length L (mm)</b>			41
<b>Shaft Diameter (mm)</b>			6.35
<b>Number Of Lead Wires</b>			8
<b>Insulation Class</b>			B
<b>Withstand Voltage Level</b>			500VAC For 1minute
<b>Max. Axial Load (N)</b>			15N
<b>Max. Radial Load (N)</b>			75N

	(20mm From the Flange)
<b>Operating Temperature</b>	-20??+50 ?
<b>Surface Temperature Rise</b>	Max.80? (Both Phases Connected With Rated Current)
<b>Insulation Impedance</b>	Minimum 100M?, 500V DC
<b>Weight (kg)</b>	0.45
<b>No-Load Start Frequency</b>	12K
<b>Ingress Protection</b>	IP40

[2S57Q-0541 Dimensions](#)

[KincoCatalog Stepper](#)