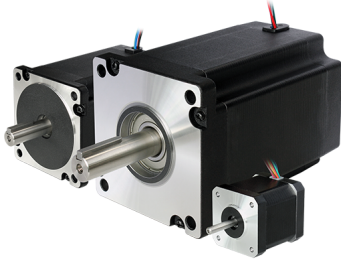


## 2S42Q-0348



- Phase Current (A) Series: 0.7 Parallel: 1.4
- Holding Torque: 0.34

Rating: Not Rated Yet

**Price**

Sales price without tax 35,00 €

[Ask a question about this product](#)

Manufacturer [Maker: Kinco](#)

Description	Technical Specifications	2S42Q-0348
	<b>Step Angle</b>	1.8°
<b>Phase Current (A)</b>	<b>Series</b>	0.7
	<b>Parallel</b>	1.4
<b>Holding Torque (Nm)</b>		0.34
<b>Damping Torque (Nm)</b>		0.026
<b>Winding Resistance (?)</b>		4.6±10%
<b>Winding Inductance (mH)</b>		4.0±20%
<b>Motor Inertia (kg.cm)</b>		0.068
<b>Motor Length L (mm)</b>		48
<b>Shaft Diameter (mm)</b>		5
<b>Number Of Lead Wires</b>		8
<b>Insulation Class</b>		B
<b>Withstand Voltage Level</b>		500VAC For 1minute
<b>Max. Axial Load (N)</b>		10N
<b>Max. Radial Load (N)</b>		28N (20mm)

	From The Flange)
<b>Operating Temperature</b>	-20??+50?
<b>Surface Temperature Rise</b>	Max.80? (Both Phases Connected With Rated Current)
<b>Insulation Impedance</b>	Minimum 100M?, 500V DC
<b>Weight (kg)</b>	0.36
<b>No-Load Start Frequency</b>	14K
<b>Ingress Protection</b>	IP40

[2S42Q-0348 Dimensions](#)

[KincoCatalog Stepper](#)