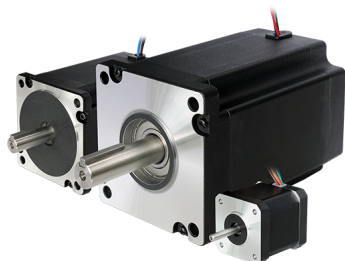


## 2S56Q-030B5



- Phase Current (A): 6.0
- Holding Torque (Nm): 2.5

Rating: Not Rated Yet

Price

[Ask a question about this product](#)

Manufacturer [Maker: Kinco](#)

Description	Technical Specifications	2S56Q-030B5
	Step Angle	1.8°±5%
	Phase Current (A)	6.0
	Holding Torque (Nm)	2.5
	Damping Torque (Nm)	0.12
	Winding Resistance (?)	0.5±10%
	Winding Inductance (mH)	1.8±20%
	Motor Inertia (kg.cm <sup>2</sup> )	0.75
	Motor Length L (mm)	111
	Number Of Lead Wires	4
	Insulation Class	B
	Withstand Voltage Level	600V AC 1S 5mA
	Max. Axial Load (N)	15
	Max. Radial	75

<b>Load (N)</b>	
<b>Operating Temperature</b>	-20?~50?
<b>Surface Temperature Rise</b>	Max.80? (Rated Phase Current After Two Phases Are Connected)
<b>Insulation Impedance</b>	Minimum 100M? , 500V DC
<b>Weight (kg)</b>	1.5
<b>Lead Wire Length (mm)</b>	300±10

[2S56Q-030B5 Dimensions](#)

[Kinco Two-Phase Stepper Motor 56 Series](#)