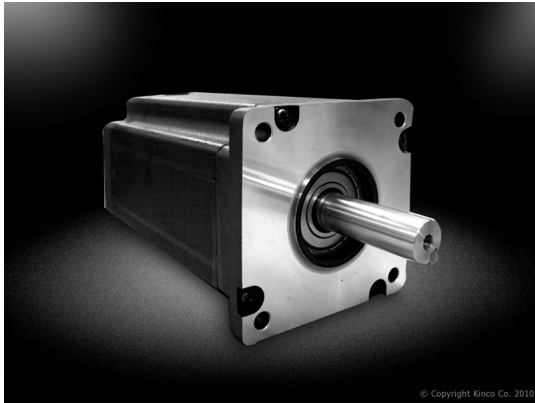


## SMH110D-0188-30AA



### Medium Inertia Servo Motor

- Flange Size: 110mm
- Rated Power: 1.05KW up to 1.88KW
- Speed: 2000rpm/3000rpm
- 8 ?????
- 2500ppr incremental encoder, 5-6 Nm

Rating: Not Rated Yet

#### Price

Sales price without tax 599,00 €

[Ask a question about this product](#)

Manufacturer [ELCON | Systems & Components](#)

Description	Motor Series Model	Medium Inertia, Flange Size 110mm					
		SMH110D-0125-	SMH110D-0126-	SMH110D-0105-	SMH110D-0157-	SMH110D-0126-	SMH110D-0188-
Compatible Driver		30AAK-4LKX CD430-0125-	30AAK-4HKX CD620-0126-	20AAK-4LKX CD430-0105-	30AAK-4HKX CD620-0157-	20AAK-4LKX CD430-0126-	30AAK-4HKX CD620-0188-
DC Link Voltage		0065-AA-000 300	0043-AA-000 560	0054-AA-000 300	0054-AA-000 560	0062-AA-000 300	0062-AA-000 560
UDC Rated Power		1250	1260	1050	1570	1260	1880
PN(W) Rated Torque TN(Nm) Rated		4	4	5		6	
Speed nN(Rpm) Rated Current IN (A)		3000	3000	2000	3000	2000	3000
Maximum Torque		12	12	15		18	

<b>Tm (Nm)</b>				
<b>Maximum Current</b>	19.5	12.9	17.7	18.6
<b>Im (A)</b>				
<b>Standstill Torque</b>	4.4	4.4	5.5	6.6
<b>TS (Nm)</b>				
<b>Standstill Current</b>	6.82	4.73	6.49	6.765
<b>IS (A)</b>				
<b>Resistance</b>	0.8	1.83	1.03	1.258
<b>Line-Line RL (?)</b>				
<b>Inductance</b>	6.4	13.5	7.8	9.62
<b>Line-Line LL (mH)</b>				
<b>Electrical Time Constant</b>	7.9	7.37	7.57	7.64
<b>?e (ms)</b>				
<b>Mechanical Time Constant</b>	1.4	1.63	1.55	1.65
<b>?m (ms)</b>				
<b>Reverse Voltage Constant Ke(V/krpm)</b>	45	64	55	64
<b>Torque Constant</b>	0.744	1.058	0.91	1.058
<b>Kt (Nm/A)</b>				
<b>Rotor Moment of Inertia Jm(Kg-cm<sup>2</sup>)</b>	5.8	5.8	7.2	8.5
<b>Pole Pair Number</b>	4	4	4	4
<b>Maximum Voltage Rising du/dt(KV/?s)</b>	8	8	8	8
<b>Insulation Class</b>	F	F	F	F
<b>Maximum Radial Force</b>	630	630	630	630
<b>F (N)</b>				
<b>Maximum Axial Force</b>	315	315	315	315
<b>F (N)</b>				
<b>Weight</b>	6.2	6.2	7.2	8.2
<b>G(Kg)</b>				
<b>Length of Motor</b>	168	168	185	202
<b>L(mm)</b>				
<b>Position Feedback</b>			Incremental Encoder 2500ppr	
<b>Device Cooling Method</b>			Totally Enclosed, Non-Ventilated	
<b>Protection Level</b>			IP65 for Body, Shaft Sealing IP54	
<b>Temperature</b>			-20?~40?	
<b>Humidity</b>			Below 90% RH (No Condensing)	
<b>Ambient Environment</b>			Away from Active Gas, Combustible Gas, Oil Drops and Dust	
<b>Altitude</b>			Maximum Altitude 4000m, Rated Power at 1000m or Below, Above 1000m: Decreasing 1.5% Per 100m Rise	

[Servo System](#)