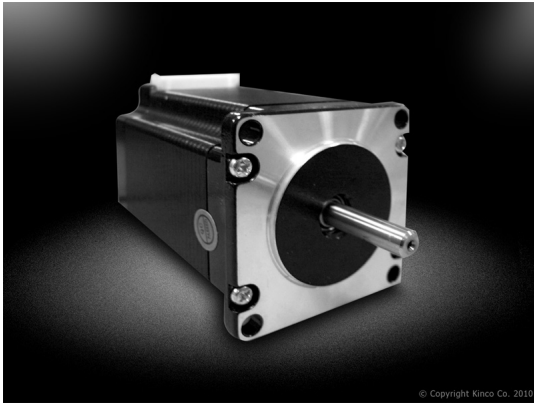


2S56Q-02054



- ????? ??????: 1.5~6?
- ????? ??????????: 0.5~2.5Nm
- ?????????? ??????????: 56.4

?????????: ??? ?????????????? ??????

Price

Sales price without tax 41,00 €

[???????? ??? ?? ??????](#)

Manufacturer [????????????????? Kinco](#)

Description	Model	2S56Q-030B5	2S56Q-02976	2S56Q-02054	2S56Q-02741
	Step Angle	1.8 degrees ±5%			
Phase Current (A)	6	3	3	1.5	
Holding Torque (Nm)	2.5	1.5	0.9	0.5	
Damping Torque (Nm)	0.17	0.07	0.04	0.02	
Winding Resistance (?)	0.5±10 %	0.95±10 %	0.65±10 %	1.8±10 %	
Winding Inductance(mH)	1.5±20 %	3.4±20 %	2.5±20 %	4.1±20 %	
Motor Inertia (Kg.com²)	0.7	0.46	0.26	0.14	
Motor	115	76	54	41	

Length L(mm)				
Number of Lead Wires	4			
Insulation Class	B			
Withstand Voltage Level	500VAC,one minute			
Max.Axial Load (N)	15			
Max.Radial Load (N)	75			
Operating Temperature	-20??50?			
Surface Temperature Rise	Max.80? ?Rated Phase Current after Two Phases are Connected)			
Insulation Impedance	Minimum 100M?,500VDC			
Weight (Kg)	1.5	1	0.6	0.42
Lead Wire Length (mm)	300±10	300±5		

[Stepper System](#)