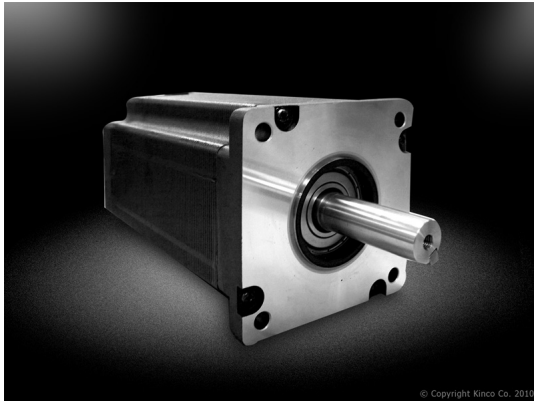


SMH110D-0125-30AA



????????????????????

- ??????? 110mm
- ??? 1.05KW ??? 1.88KW ????
- 2000rpm/3000rpm
- 8 ?????
- 2500ppr incremental encoder, 5-6 Nm

?????????: ??? ?????????????????

Price

Sales price without tax 473,00 €

[???????? ??? ?? ??????](#)

Manufacturer [ELCON | Systems & Components](#)

Description	Motor Series Model	Medium Inertia, Flange Size 110mm					
		SMH110D-0125-	SMH110D-0126-	SMH110D-0105-	SMH110D-0157-	SMH110D-0126-	SMH110D-0188-
Compatible Driver		30AAK-4LKX CD430-0125-	30AAK-4HKX CD620-0126-	20AAK-4LKX CD430-0105-	30AAK-4HKX CD620-0157-	20AAK-4LKX CD430-0126-	30AAK-4HKX CD620-0188-
DC Link Voltage		0065-AA-000 300	0043-AA-000 560	0054-AA-000 300	0054-AA-000 560	0062-AA-000 300	0062-AA-000 560
UDC Rated Power		1250	1260	1050	1570	1260	1880
PN(W) Rated Torque TN(Nm) Rated		4	4	5		6	
Speed nN(Rpm) Rated Current IN (A)		3000	3000	2000	3000	2000	3000
Maximum Torque		6.5	4.3	5.9		6.2	
Tm (Nm) Maximum Current		12	12	15		18	
		19.5	12.9	17.7		18.6	

Im (A)				
Standstill Torque	4.4	4.4	5.5	6.6
TS (Nm)				
Standstill Current	6.82	4.73	6.49	6.765
IS (A)				
Resistance	0.8	1.83	1.03	1.258
Line-Line RL (?)				
Inductance	6.4	13.5	7.8	9.62
Line-Line LL (mH)				
Electrical Time Constant	7.9	7.37	7.57	7.64
?e (ms)				
Mechanical Time Constant	1.4	1.63	1.55	1.65
?m (ms)				
Reverse Voltage Constant Ke(V/krpm)	45	64	55	64
Torque Constant	0.744	1.058	0.91	1.058
Kt (Nm/A)				
Rotor Moment of Inertia Jm(Kg-cm ²)	5.8	5.8	7.2	8.5
Pole Pair Number	4	4	4	4
Maximum Voltage Rising du/dt(KV/?s)	8	8	8	8
Insulation Class	F	F	F	F
Maximum Radial Force	630	630	630	630
F (N)				
Maximum Axial Force	315	315	315	315
F (N)				
Weight	6.2	6.2	7.2	8.2
G(Kg)				
Length of Motor	168	168	185	202
L(mm)				
Position Feedback			Incremental Encoder 2500ppr	
Device				
Cooling Method			Totally Enclosed, Non-Ventilated	
Protection Level			IP65 for Body, Shaft Sealing IP54	
Temperature			-20?~40?	
Humidity			Below 90% RH (No Condensing)	
Ambient Environment			Away from Active Gas, Combustible Gas, Oil Drops and Dust	
Altitude			Maximum Altitude 4000m, Rated Power at 1000m or Below, Above 1000m: Decreasing 1.5% Per 100m Rise	

[Servo System](#)