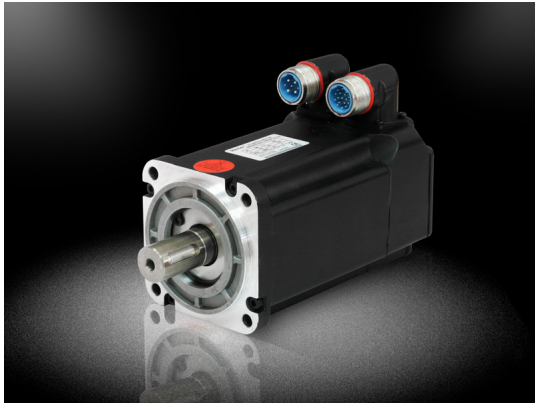


SMH80S-0100-30AA



?? 750W ??? 1000W, 3000rpm, ??????? 80mm, 6 ??????, 2500ppr incremental encoder

?????????????: ??? ?????????????????????????????????

Price

Sales price without tax 484,00 €

[?????????? ??? ?? ???????](#)

Manufacturer [ELCON | Systems & Components](#)

Description	Motor Series	Small Inertia, Flange Size 80mm	
	Model	SMH80S-0075-30AAK-3LKX	SMH80S-0100-30AAK-3LKX
	Compatible Driver	CD420-0075-0039-AA-000	CD430-0100-0063-AA-000
	DC Link Voltage UDC	300	300
	Continuous Power PN (W)	750	1000
	Performance Rated Torque TN (Nm)	2.39	3.18
	Rated Speed nN(rpm)	3000	3000
	Rated Current IN (A)	3.9	6.3
	Maximum Torque Tm (Nm)	7.17	9.48
	Maximum	11.7	18.9

Current Im (A)		
Standstill Torque TS (Nm)	2.63	3.3
Standstill Current IS (A)	4.4	6.93
Resistance Line-Line RL (?)	1.4	0.86
Inductance Line-Line LL (mH)	7.5	4.5
Electrical Time Constant τ_e (ms)	5.35	5.23
Mechanical Time Constant τ_m (ms)	0.75	0.89
Reverse Voltage Constant Ke (V/krpm)	40	34
Torque Constant Kt (Nm/A)	0.662	0.562
Rotor Moment of Inertia Jm(Kg-cm ²)	1.36	1.9
Pole Pair Number	3	3
Maximum Voltage Rising du/dt (KV/?s)	8	8
Insulation Class	F	F
Maximum Radial Force F (N)	335	335
Maximum Axial Force F (N)	167.5	167.5
Weight G(Kg)	3.3	3.9
Length of Motor L(mm)	147	167
Position Feedback Device	Incremental Encoder 2500ppr	
Cooling Method	Totally Enclosed, Non-Ventilated	
Protection Level	IP65 for Body, Shaft Sealing IP54	
Environmental Temperature	-20??40?	
Environmental Humidity	Below 90% RH (No condensing)	
Operating Environment	Away from Active Gas, Combustible Gas, Oil Drops and Dust	
Altitude	Maximum Altitude 4000m,	

e	Rated Power at 1000m or Below, Above 1000m: Decreasing 1.5% Per 100m Rise
---	--

[Servo System](#)